



WALLOOMSAC HEADWATERS PARK & NATURAL AREA CONSERVATION PROJECT

Act now to protect this treasured recreational and natural area in Bennington, Vermont

The Friends of Walloomsac Headwaters Park & Natural Area have partnered with the Bennington County Conservation District and the Vermont Land Trust to help the Town of Bennington acquire 168 acres along Jewett Brook, South Stream, and the Walloomsac River in Bennington. This mix of uplands, wetlands and watercourses will offer visitors the opportunity to access miles of walking trails, view the spring warbler migration, kayak the streams and open areas of the marsh, fish for a variety of species, listen to frog choruses at sunset, or search for spring wildflowers — all within a short walk of downtown Bennington.

A Once in a Lifetime Opportunity to Protect the Walloomsac Headwaters Park & Natural Area

Although informal foot and bike paths already traverse the property, the land will soon be for sale. We must act now as a community to help the town of Bennington to keep the land available for recreationalists, naturalists, anglers, floaters, hikers, school children, bicyclists, and other residents of and visitors to the community.

You can help save this land. Nearly 55% of the \$222,000 required to make this project possible has been committed. The Vermont Housing and Conservation Board approved a grant to the Town of Bennington for \$122,000. The Friends must raise \$100,000 by January 31, 2015 to complete the project.



“In Bennington we have an extraordinary opportunity to conserve what is both largely a wild landscape of earth and water and, at the same time, a place where people of all ages are welcome to recreate. The opportunity to conserve this place where nature and human needs meet is one to which our generations must rise.”

- Shelly Stiles,
Director, Bennington County
Conservation District



PROJECT HIGHLIGHTS

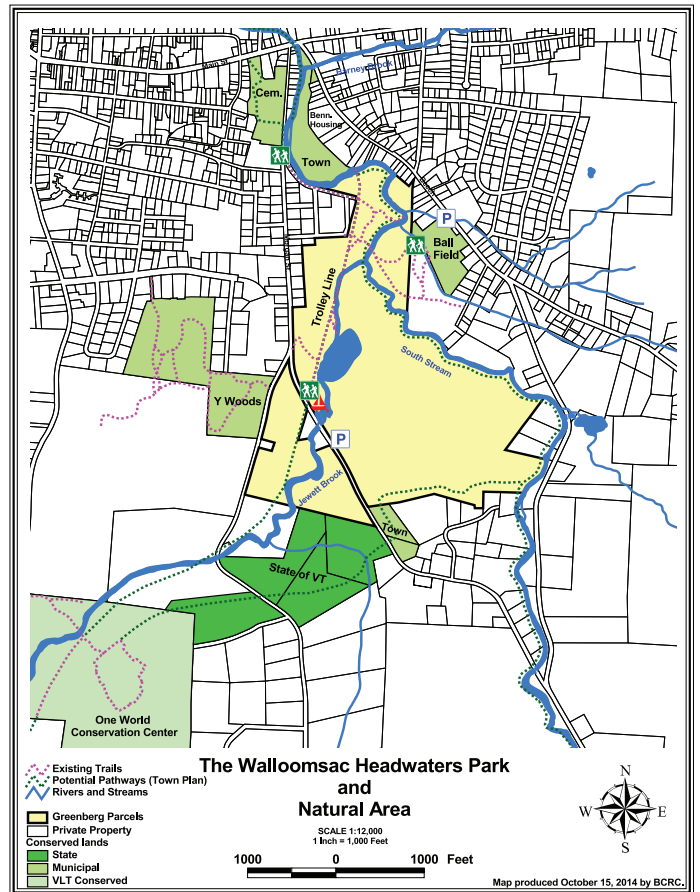
- ▶ The site is **easily accessible** from the Beech Street ball field, Belvedere Street, and the former trolley line at Morgan Street.
- ▶ The site is **home to diverse bird species**, cold and warm water fishes, and organisms unique to wetland habitats.
- ▶ Several dense neighborhoods have direct **pedestrian access** to the land
- ▶ Nearly fifty species of **butterflies** have been recorded there.
- ▶ **Foot and bike paths** traverse the uplands, and provide several points for **easy launching of kayaks**
- ▶ The spring **wild flowers** are famous locally.
- ▶ Fish population surveys last done in 1993 documented the presence of **wild brook, brown and rainbow trout** populations in South Stream, and of wild brown trout populations in Jewett Brook.

COMMUNITY GOAL

Recognizing the recreational opportunity for the community, as well as possible economic opportunity in continuing to develop Bennington as an interesting tourist destination, the Select Board has empowered the Friends of Morgan Street Wetlands to try to make this project possible.

The Town's Park and Open Space Plan specifically mentions this area and notes a lack of direct public access. This plan identifies a possible trail corridor along South Stream, and calls for "seeking opportunities for providing access to and along streams and the Walloomsac River."

The Town of Bennington's Strategic Economic Development Plan calls for "increasing the awareness and utilization of the region's outdoor recreational assets," and for enhancing "recreation opportunity development."



WALLOOMSAC HEADWATERS PARK & NATURAL AREA CONSERVATION PROJECT

How can you help?

Consider a tax-deductible gift today. Mail a pledge form or your gift, made out to the Vermont Land Trust with "Walloomsac Headwaters" in the memo line to:

 **Vermont Land Trust**
8 Bailey Ave., Montpelier, VT 05602

Or, donate online at: vlt.org/donate

For more information contact:

Donald Campbell, Vermont Land Trust at
(802) 442-4915 or donald@vlt.org

Elise Annes, Vermont Land Trust at
(802) 262-1206 or elise@vlt.org